

# IKT - INSTALLATION MANUAL



**KLIMAIRE<sup>®</sup>** ≈

Mark of superior quality

**EZ Kuick Connect™ Pre-charged Installation Kit**

Refrigerant Pre-charged Insulated Copper Tubing Kit

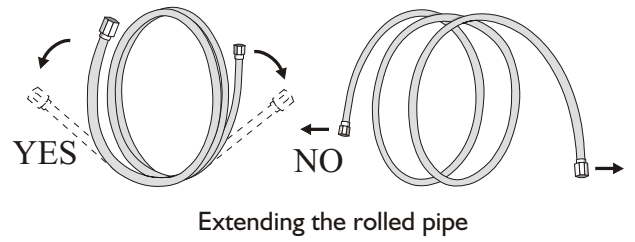
HEAT & COOL

[www.HeatAndCool.com](http://www.HeatAndCool.com)

# INSTALLATION MANUAL

## Unrolling the pipes

- Do not remove the cap from the pipe until connecting it, to avoid dampness or dirt from entering.
- If the pipe is bent or pulled too often, it will become stiff.
- Do not bend the pipe more than three times at one point.
- When extending the rolled pipe, straighten the pipe by unwinding it gently as shown in the picture.



## Connections to the indoor unit

1. Remove the indoor unit pipe cap (check that there is no debris inside).
2. Smoothly align the female quick connector to the male one which is fixed with indoor unit by hand at first, and fasten smoothly. Hold the short position (picture A) of male quick connector by open-end spanner and do not turn, use torque wrench to take the short position (picture B) of the female quick connector which fixed with long copper pipe, and quickly turn to tighten them. Follow the proper torque chart.

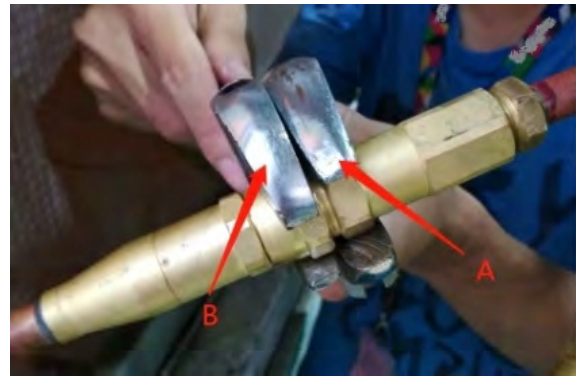


**IMPORTANT: Since the coupling works with trapping rings, it may leak if you undo and reconnect the pipes. This will also void the warranty.**

**After completing the connection, check all the connections are sealed correctly using leak detection spray or soap suds. If any bubbles form, the system has a leak on the screw connector must be re-tightened using an open-ended spanner.**



Picture A



Picture B

**After you start and test run the system make sure there are no gas leaks, then proceed to item 3**

3. In order to protect the quick-connector, and prevent condensation on the union, please cover the quick-connector with the deadening pads, when finish fastening the copper pipe to the quick-connector



4. Use the insulation to cover the quick-connector, and use the tape to fasten them tightly together. Be sure to put the drain pipe at the bottom, after start up, test run and performed gas leak test.



## Connecting the refrigerant pipe to outdoor unit

Ensure the pipe connectors are the same to the indoor's and outdoor's respectively during connection.

Large size connector must be connected with the large size outdoor unit quick connector that has an additional port to check pressure or charge refrigerant

1. First remove the water tray on the outdoor unit as shown in Fig.25.1.

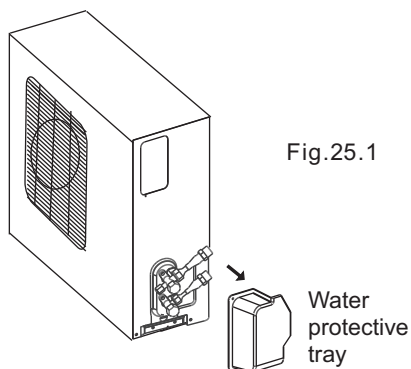


Fig.25.1

2. Do not remove the plastic seals from the outdoor unit and the appropriate refrigerant pipes until immediately before you connect them, Fig.25.2

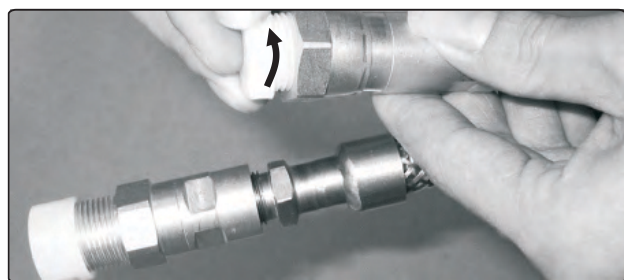


Fig.25.2

## CONNECTING THE PIPES

3. Remove the plastic seals from the outdoor unit valve and male quick connectors until when you immediately install them.



4. Smoothly align the female quick connector correctly to the male one which is fixed with outdoor unit valve by hand at first, and fasten simply.

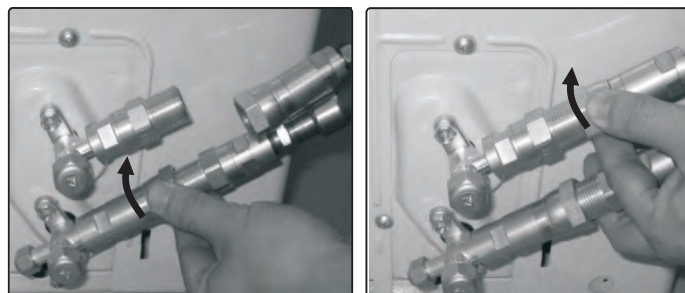


Fig.25.3

5. Hold the short position (remark A) of male quick connector by open-end spanner and do not turn, use torque wrench to take the short position (remark B) of the female quick connector which is fixed with long copper pipe, and quickly turn to tighten them.

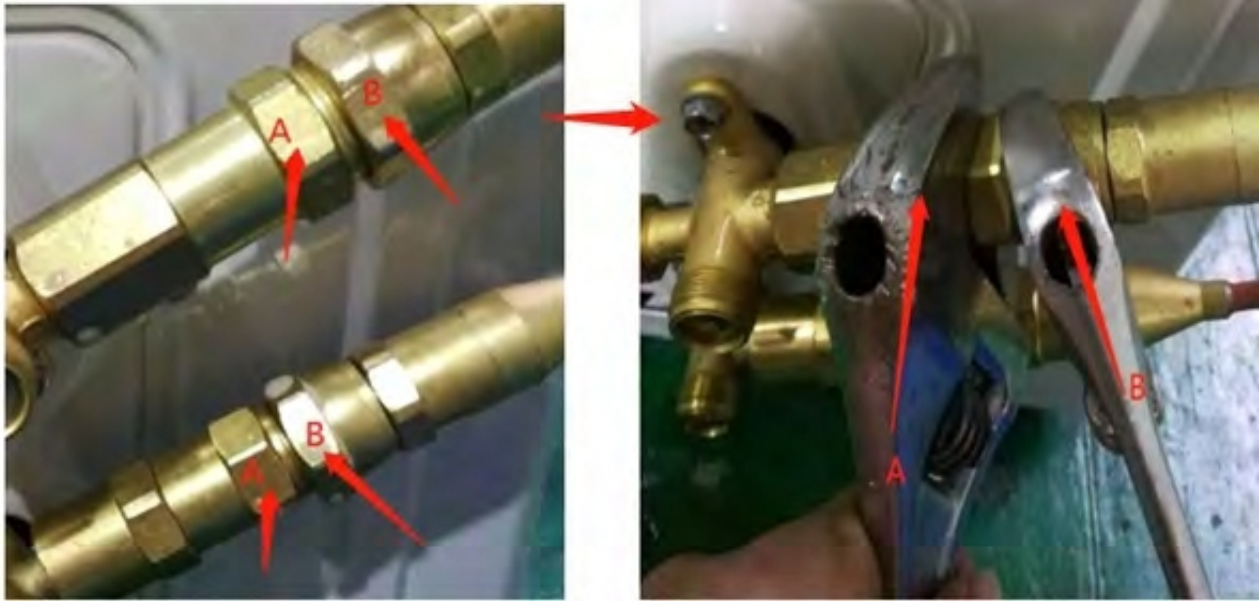
Follow the proper torque chart on page 26.

The refrigerant pipes must be connected to the valves on the outdoor unit with as little stress as possible.

Ensure that the screw connectors do not skew as you tighten them and work quick to prevent refrigerant leakage.

## INSTALLATION MANUAL - Refrigerant Piping Connection

Two open end spanners must be used in order not to twist and kink the copper pipe.



Important! Since the couplings work with tapping rings, it may leak if you undo and reconnect the couplings. **This will also void the warranty**

Important! The conical ring on the valve has an important sealing function together with the sealing seat in the caps. Ensure that you do not damage the cone and that you keep the cap free of dirt and dust.

**FOR FURTHER DETAILS PLEASE REFER  
TO THE QUICK-CONNECT MINI-SPLIT  
INSTALLATION MANUAL**

# **KLIMAIRE<sup>®</sup> ≈**

The Klimaire logo is a registered Trademark of Klimaire Products inc.

7999 NW 81st Place - Miami, FL 33166

Tel: (305)593-8358 Fax (305) 675-2212

[www.klimaire.com](http://www.klimaire.com) [sales@klimaire.com](mailto:sales@klimaire.com)

The design and specifications are subject to change without prior notice for product improvement. Consult with the sales agency or manufacturer for details.