



## Submittal Data Sheet

Daikin AURORA R-32 0.75-Ton Wall Mounted Unit

FTXV09AVJU9-RXT09AVJU9

### FEATURES

- Hot start technology
- Auto-restart (after power failure)
- IR controller included

### BENEFITS

- Quiet operation
- Low ambient cooling operation down to -4°F (-20°C) with field setting and air adjustment grille
- Operating Range - Cooling (50°F - 114.8°F)
- Operating Range - Heating (-13°F - 64.4°F)
- 12 year limited parts and compressor warranty with online registration
- 5 year limited parts warranty for commercial applications

### INDOOR UNIT



### OUTDOOR UNIT





## Submittal Data Sheet

Daikin AURORA R-32 0.75-Ton Wall Mounted Unit

FTXV09AVJU9-RXT09AVJU9

### SYSTEM PERFORMANCE

Indoor Unit Model No.	FTXV09AVJU9	Indoor Unit Name:	3/4 Ton Wall Mount R-32
Outdoor Unit Model No.	RXT09AVJU9	Outdoor Unit Name:	21.0 SEER2, Heat Pump, Ductless ODU, 0.75 Ton, Daikin AURORA R-32
Rated Cooling Capacity (Btu/hr):	9,000	Rated Cooling Conditions:	Indoor (°F DB/WB): 80 / 67 Ambient (°F DB/WB): 95 / 75
Sensible Capacity (Btu/hr):		Rated Piping Length(ft):	25
Max/Min Cooling Capacity (Btu/hr):	11,200 / 4,400	Rated Height Difference (ft):	0.00
Cooling Input Power (kW):			
SEER2 (Non-Ducted/Ducted):	21.00 /	HSPF2 (Non-Ducted/Ducted):	10.2 /
EER2 (Non-Ducted/Ducted):	12.20 /		
Rated Heating Capacity (Btu/hr):	10,900	Rated Heating Conditions:	Indoor (°F DB/WB): 70 / 60 Ambient (°F DB/WB): 47 / 43
Max/Min Heating Capacity (Btu/hr):	16,000 / 4,400		

### SYSTEM DETAILS

Refrigerant Type:	R-32	Cooling Operation Range (°F DB):	50 - 115
Holding Refrigerant Charge (lbs):	1.65 Lbs	Heating Operation Range (°F WB):	-13 - 60
Additional Charge (oz/ft):	0.22	Max. Pipe Length (Vertical) (ft):	49
Pre-charge Piping (Length) (ft):	49	Cooling Range w/Baffle (°F DB):	-4 -
Max. Pipe Length (Total) (ft):	66		
Max Height Separation (Ind to Ind ft):	0		

## Submittal Data Sheet

Daikin AURORA R-32 0.75-Ton Wall Mounted Unit

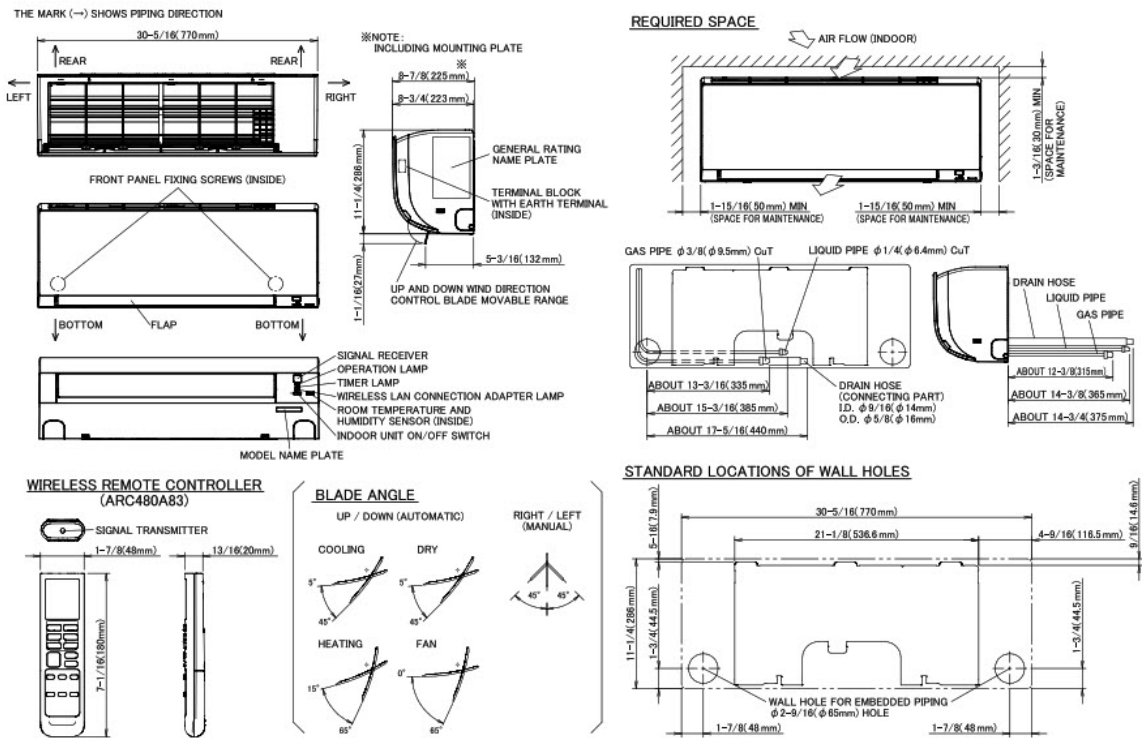
FTXV09AVJU9-RXT09AVJU9

### INDOOR UNIT DETAILS

Power Supply (V/Hz/Ph):	//	Airflow Rate (H/M/L/SL) (CFM):	381/272/230/166
Power Supply Connections:	L1, L2, L3, G	Moisture Removal (Gal/hr):	
Min. Circuit Amps MCA (A):		Gas Pipe Connection (inch):	3/8
Max Overcurrent Protection (MOP) (A):		Liquid Pipe Connection (inch):	1/4
Dimensions (HxWxD) (in):	11-1/4 x 30-5/16 x 8-3/4	Condensate Connection (inch):	5/8
Net Weight (lb):	19	Sound Pressure (H/M/L/SL) (dBA):	43/35/31/24
Ext. Static Pressure (Rated/Max) (inWg):	/	Sound Power Level (dBA):	

## DIMENSIONAL DRAWING - INDOOR UNIT

CTXV07AVJU9, FTXV09/12AVJU9



3D150958A



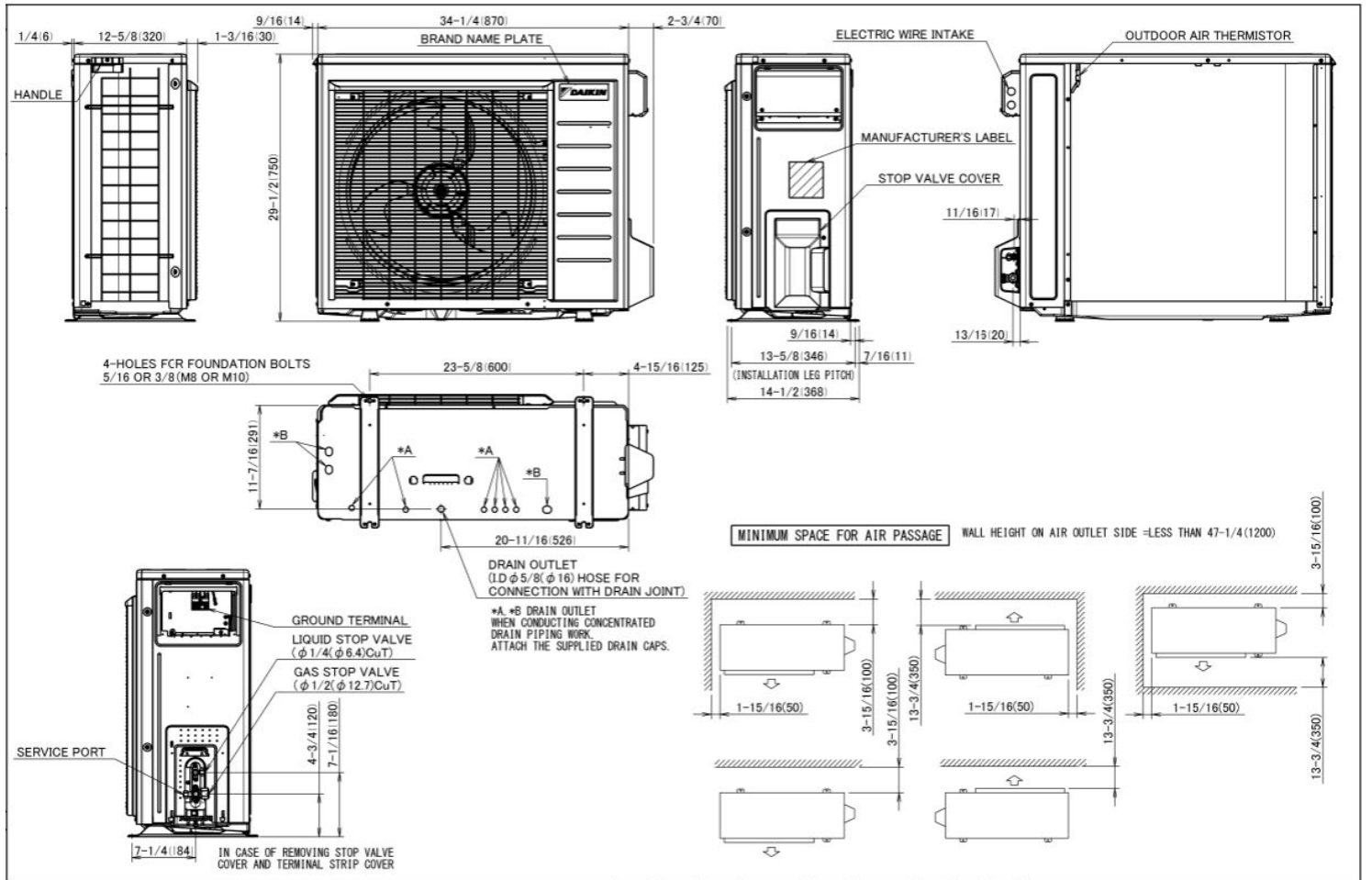
## Submittal Data Sheet

Daikin AURORA R-32 0.75-Ton Wall Mounted Unit  
FTXV09AVJU9-RXT09AVJU9

### OUTDOOR UNIT DETAILS

Power Supply (V/Hz/Ph):	208-230 / 60 / 1	Compressor Stage:	Inverter
Power Supply Connections:	L1, L2, L3, G	Capacity Control Range (%):	-
Min. Circuit Amps MCA (A):	11.6	Airflow Rate (H) (CFM):	1088
Max Overcurrent Protection (MOP) (A):	15	Gas Pipe Connection (inch):	3/8
Max Starting Current MSC(A):		Liquid Pipe Connection (inch):	1/4
Rated Load Amps RLA(A):		Sound Pressure (H) (dBA):	49
Dimensions (HxWxD) (in):	21-15/16 x 26-9/16 x 11-3/16	Sound Power Level (dBA):	
Net Weight (lb):	63		

### DIMENSIONAL DRAWING - OUTDOOR UNIT





## Submittal Data Sheet

Daikin AURORA R-32 0.75-Ton Wall Mounted Unit

FTXV09AVJU9-RXT09AVJU9

### INDOOR ACCESSORIES

PART NUMBER	DESCRIPTION	INCLUDED
-------------	-------------	----------

AZAI6WSCDKB	DKN Residential Cloud Wi-Fi Adaptor for Single- and Multi-Zone System (S21)	No
AZAI6WSPDKC	DKN Plus Interface	No
BRCW901A03	BRC944B2 CONTROL CABLE, 10FT	No
BRCW901A08	Wired Remote Controller Cord - 8m/26ft	No
DACA-CP1-1	Mini Aqua Condensate Pump	No
DTST-ONE-ADA-A	Daikin One+ Smart Thermostat for VRV, SkyAir, Single- and Multi-Zone System	No
DTST-TOU-ADA-A	Daikin One Touch Smart Thermostat (with Translation Adaptor for S21 and P1P2)	No
KAF970A46	Titanium apatite photocatalytic air-purifying filter WITHOUT frame	No
KRP067A41	Adaptor for wired controller	No
KRP928BB2S	RA Interface Adaptor for DIII-Net -	No

### OUTDOOR ACCESSORIES

PART NUMBER	DESCRIPTION	INCLUDED
-------------	-------------	----------

DACA-WB-3	Powder-Coated Wall-Mounted Bracket	No
KKG067A41	Back protection wire net (09 & 12)	No
KPS067A41	Snow hood (intake side plate) (09 & 12)	No
KPS067A42	Snow hood (intake rear plate) (09 & 12)	No
KPS067A44	Snow hood (outlet) (09 & 12)	No
KPW937F4	Air direction adjustment grille (09 & 12)	No